

C.S.S.A.

## David and Saul

### IN THE CAVE



THIS LITTLE CAVE MODEL IS SIMPLE AND QUICK ENOUGH TO MAKE FOR ALL IN CLASS TO HAVE ONE.

#### **MATERIALS REQUIRED.**

SMALL CARDBOARD BOX SUCH AS A SHOE BOX OR MAKE UP A BOX BY FOLLOWING DIRECTIONS OPPOSITE.

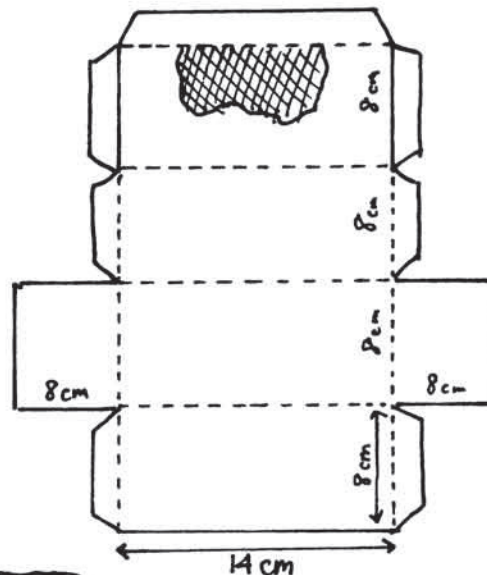
● BLACK PAINT ● GLUE.

#### **HOW TO MAKE IT.**

PAINT INSIDE OF BOX BLACK. IF MAKING THE BOX, PAINT THE INSIDE BEFORE ASSEMBLING.

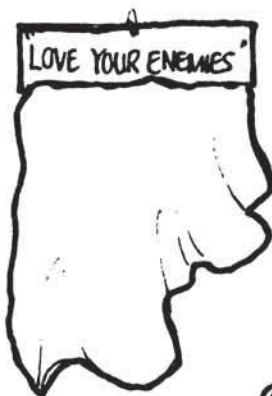


FOLD ON DOTTED LINES. GLUE FLAPS.  
CUT OUT SHADED AREA (CAVE MOUTH)



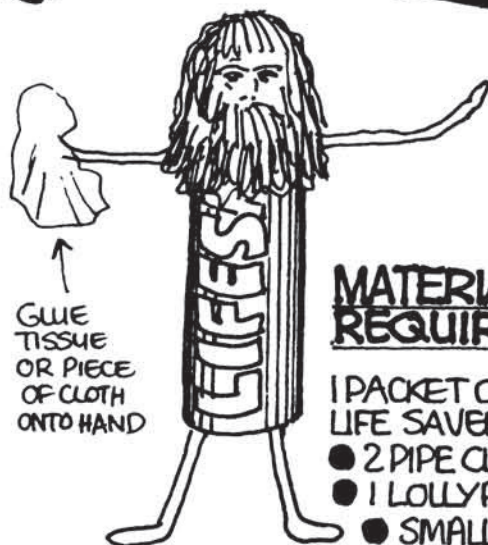
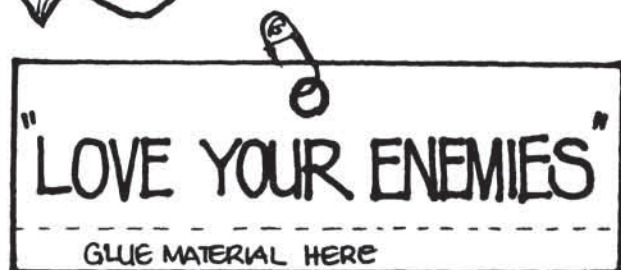
BEFORE GLUING THE ENTIRE BOX COPY THE FIGURE OF SAUL & DAVID ONTO CARD AND GLUE ONTO THE CAVE FLOOR. COLOUR IN THE FIGURES BEFORE STICKING THEM DOWN. TO ADD A LITTLE MORE REALISM, YOU MAY LIKE TO ADD A FEW STAND UP CARD 'ROCKS' OF YOUR OWN DESIGN.

# BADGE



## HOW TO MAKE IT.

USE THE DESIGN BELOW AND COPY ONTO CARD. GLUE ON OFF-CUTS OF MATERIAL. PIN ON TO SCHOLARS.



## MATERIALS REQUIRED.

- 1 PACKET OF LIFE SAVERS.
- 2 PIPE CLEANERS.
- 1 LOLLYPOP.
- SMALL PIECE OF WHITE MATERIAL.
- SMALL STRANDS OF BLACK OR BROWN WOOL.
- SMALL PIECE OF TISSUE



TIE SMALL PIECE OF CLOTH OVER LOLLYPOP. DRAW ON FACE AND GLUE ON WOOL FOR THE HAIR. WIND PIPE-CLEANER AROUND STICK FOR THE ARMS. PUSH LOLLYPOP INTO TOP OF THE PACKET. PUSH PIPECLEANER LEGS INTO BOTTOM OF THE PACKET.

