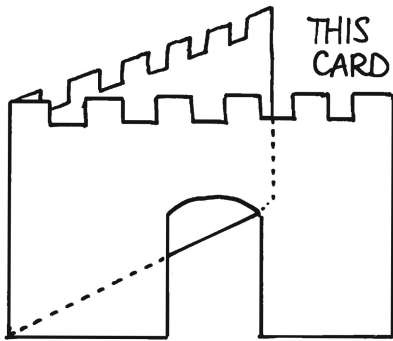


C.S.S.A.

Nehemiah Builds the Walls of Jerusalem

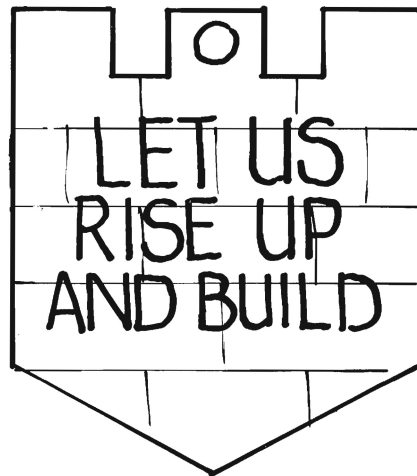
WALL CARD.



THIS SIMPLE 'WALL' CARD CAN BE MADE FROM ANY FOLDED CARD. JUST CUT OUT THE BATTLEMENTS ON THE TOP OF CARD AND DOOR ON THE FRONT.

ADD APPROPRIATE WORDING. eg:-
'LET US RISE UP AND BUILD'.

BADGE.



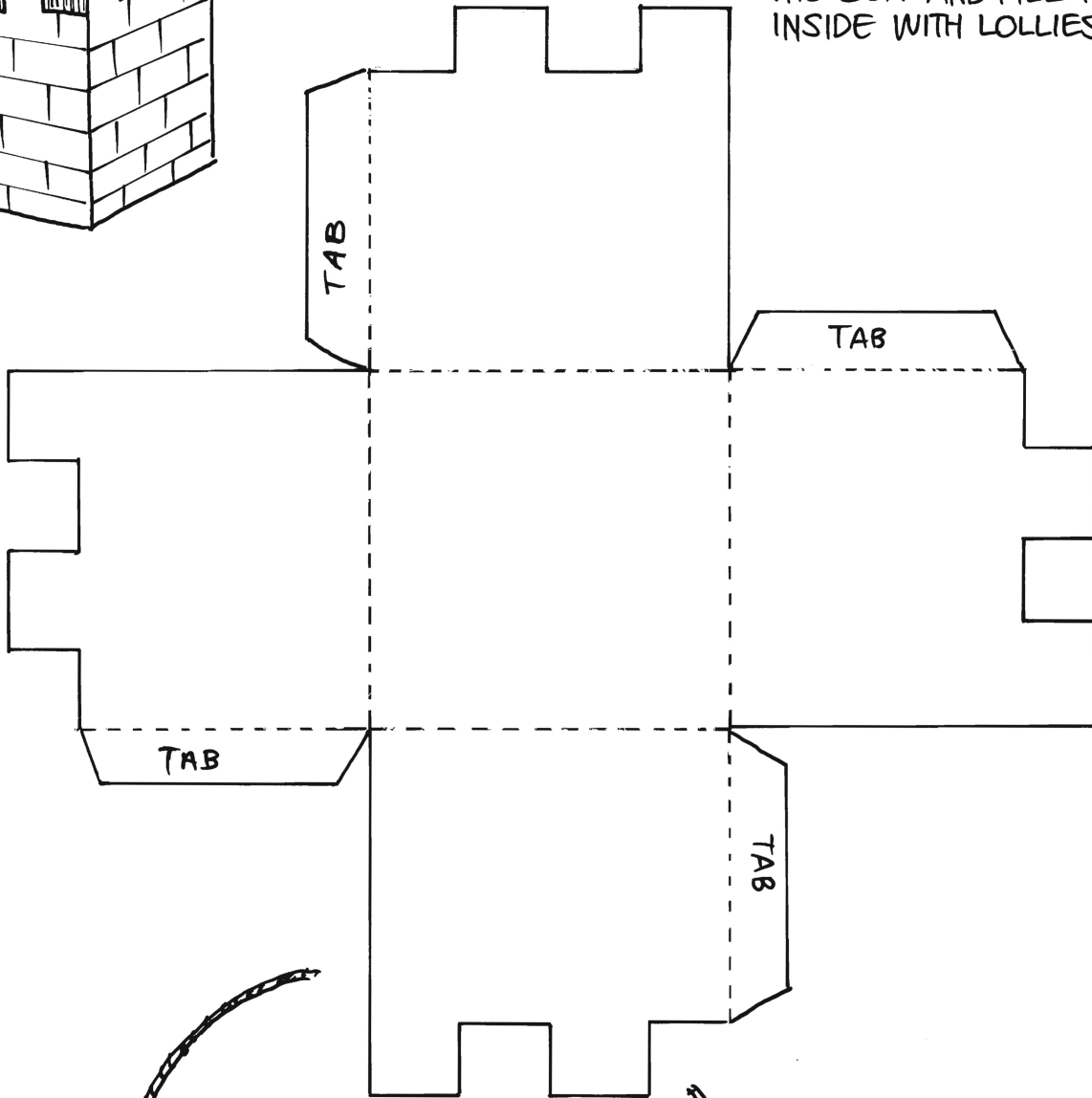
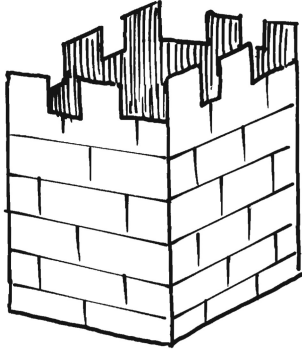
JIGSAW.

COPY THE PICTURE BELOW ONTO CARD AND CUT ALONG THE BRICKS.
SCHOLARS TO PUT BACK TOGETHER.



TAKE HOME

WALL LOLLY BOX.

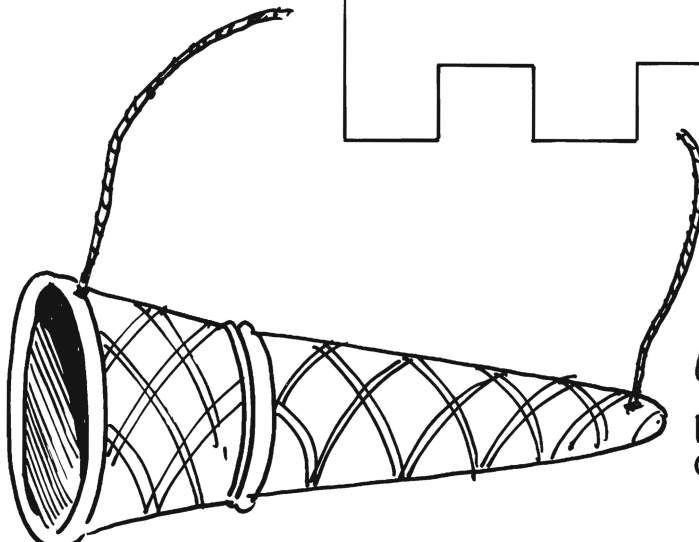


MATERIALS REQUIRED.

A PIECE OF WHITE CARD APPROX. 15cm X 15cm. ● SCISSORS ● GLUE ● BAG OF SMALL LOLLIES; IE DOLLY MIXTURES.

HOW TO MAKE IT.

CUT ON THE SOLID LINES AND FOLD ON THE DOTTED LINES. FOLD THE SIDES UPWARDS AND GLUE THE TABS TO HOLD THE BOX TOGETHER. DRAW BRICKS ON THE OUTSIDE OF THE BOX AND FILL THE INSIDE WITH LOLLIES.



A TRUMPET.

MADE FROM AN ICE-CREAM CONE AND A PIECE OF STRING.