

Elijah and the Fiery Chariot

ACTION PICTURE.

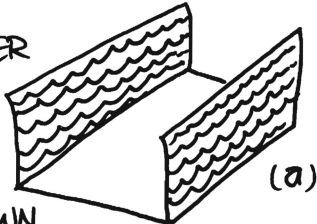
DEPICTING THE OPENING OF THE RIVER JORDAN FOR ELIJAH AND ELISHA.

MATERIALS REQUIRED.

A PIECE OF PAPER OR CARD ABOUT 9" X 12" ● GLUE ● PIPE CLEANERS ● CELLOTAPE ● COLOURED PENCILS, CRAYONS OR FELT TIPPED PENS.

HOW TO MAKE IT.

FOLD THE PAPER FROM EACH END SO THAT THE EDGES MEET IN THE MIDDLE AS SHOWN



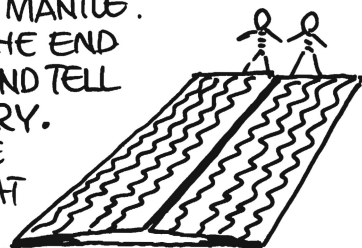
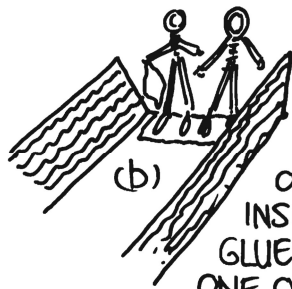
IN DIAGRAM (a). COLOUR BOTH SIDES OF THE END SECTIONS BLUE TO DEPICT THE RIVER JORDAN. COLOUR THE MIDDLE SECTION YELLOW OR BROWN

MAKE TWO PIPE-CLEANER FIGURES (SEE PREVIOUS CHAPTERS) AND CELLOTAPE THE FEET OF THE FIGURES TO THE INSIDE OF THE CARD.

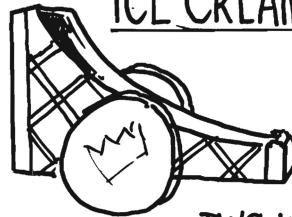
GLUE A PIECE OF CLOTH TO ONE OF THE ARMS OF THE

FIGURES TO DEPICT ELIJAH'S MANTLE. CLOSE THE END FLAPS AND TELL THE STORY.

OPEN THE JORDAN AT THE APPROPRIATE



ICE CREAM CONE CHARIOT.



MATERIALS REQUIRED.

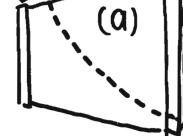
A SQUARE ICE-CREAM CONE ●

TWO WHITE CROWN MINTS

● RED CELLOPHANE ● SMALL PIECE OF CLOTH ● JELLY BABY

HOW TO MAKE IT.

CUT ON DOTTED LINE.



CUT THE ICE CREAM CONE AS SHOWN IN DIAGRAM (a).

STICK 2 CROWN MINTS ONTO THE SIDES TO ACT

AS WHEELS. USE ICING AS GLUE. PLACE JELLY BABY INSIDE CHARIOT

ON EACH SIDE OF THE CHARIOT MAKE A SMALL HOLE AND PUSH THROUGH A RED PIECE OF CELLOPHANE TO DEPICT FLAMES.



MAKE ANOTHER HOLE NEAR THE TOP OF THE CHARIOT AND THREAD THROUGH A SMALL LENGTH OF COTTON AND TIE ON A SMALL PIECE OF CLOTH TO DEPICT ELIJAH'S MANTLE.

FLIP CHART

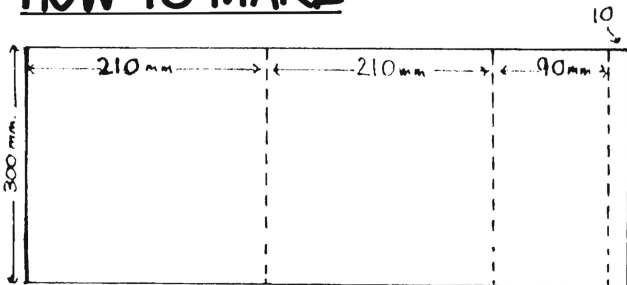
YOU WILL FIND THAT THE USE OF A FLIP CHART IS A USEFUL WAY OF ILLUSTRATING MANY LESSONS. THE BASIC IDEA GIVEN FOR THIS PARTICULAR LESSON CAN BE EASILY ADAPTED FOR USE WITH ALMOST ANY OTHER STORY.



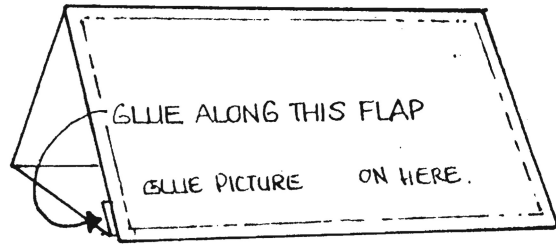
MATERIALS REQUIRED.

A PIECE OF STIFF CARD OR BOARD 520mm x 300mm ● CLEAR FILM, USED FOR OVERHEAD TRANSPARANCIES. USUALLY AVAILABLE AT OFFICE SUPPLIERS AND LARGER STATIONERS. IF THIS CANNOT BE OBTAINED, CLEAR PLASTIC SHEET, SOLD IN ROLLS FOR COVERING SCHOOL BOOKS WILL DO NICELY ● COLOURED PENCILS OR FELT PENS ● GLUE ● CELLOTAPE ● PICTURES PROVIDED ON THIS AND THE NEXT PAGE.

HOW TO MAKE

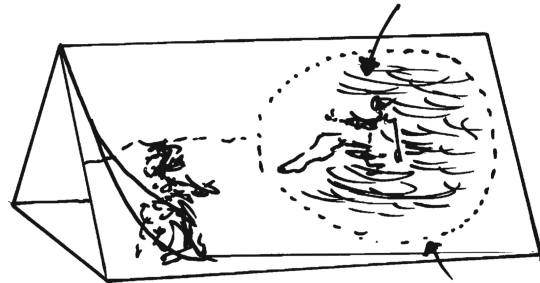


DRAW IN FOLD MARKS AND SCORE WITH A SHARP KNIFE OR EDGE OF SCISSORS. FOLD AND GLUE AS SHOWN ABOVE.



COPY OR PHOTOCOPY THE PICTURE ON THE FOLLOWING PAGE AND GLUE ON TO THE FRONT OF THE STAND AS SHOWN ABOVE. TAPE A CLEAR PIECE OF PLASTIC OVERLAY BIG ENOUGH TO COVER THE PICTURE UNDERNEATH. ON THIS OVERLAY COPY THE PICTURE OF ELIJAH IN THE WHIRLWIND AND GLUE IT ON MAKING SURE TO COVER THE STANDING UP ELIJAH UNDERNEATH. SEE BELOW.

STICK PICTURE OF WHIRLWIND HERE.



MAKE SURE YOU COVER ELIJAH UNDERNEATH.

