

C.S.S.A.

# The Kind Woman of Shunem

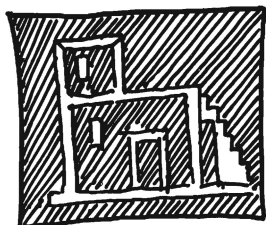
## MEMORY HELP

IT MAY BE HELPFUL TO SCHOLARS (AND TEACHERS ! ) TO MAKE A NOTE OF SOMETHING THAT WILL HELP THEM DISTINGUISH BETWEEN THE LESSONS OF ELIJAH AND THE WOMAN OF ZAREPHATH AND ELISHA WITH THE WOMAN OF SHUNEM.

**ELISHA ~ SHUNEM.**

CAN YOU SEE THE CONECTION ?

## STAMP PAPER PICTURE

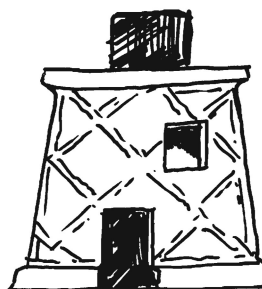


THIS METHOD OF MAKING PICTURES IS PARTICULARLY INTERESTING TO YOUNGER SCHOLARS.

IT IS THE SAME AS USING STRIPS OF GUMMED PAPER ONLY THE EDGING OF STAMP SHEETS IS USED. THESE ARE USUALLY AVAILABLE FROM POST OFFICES. WHY NOT TAKE A SMALL BOX TO YOUR LOCAL POST OFFICE AND ASK THEM TO FILL IT WITH THE EDGE OF STAMP SHEETS. COLLECT IN A DAY OR SO.

BECAUSE THE STAMP STRIP IS WHITE, COLOURED BACKING PAPER OR CARD CAN BE USED.

## MODEL HOUSE

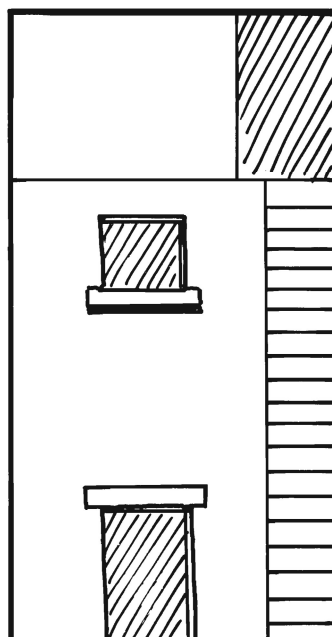


AN UPSIDE DOWN SQUARE ICE-CREAM CONE WITH A CUT OUT DOORWAY AND WINDOW AND A SQUARE LOLLY STUCK ON TOP FOR ELISHA'S SPECIAL LITTLE ROOM.



A JELLY BABY WRAPPED IN A SMALL PIECE OF CLOTH.

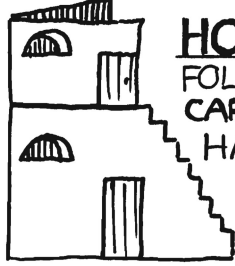
## ELISHA'S ROOM



DRAW THIS PATTERN ON AN OBLONG PIECE OF CARD. CUT OUT SHADED AREA. CUT OUT DOOR AND WINDOW.

CHILDREN TO DRAW IN THE FURNITURE IN ELISHA'S ROOM DURING CLASS. (BED, TABLE STOOL AND LAMP)

# HOUSE CARD

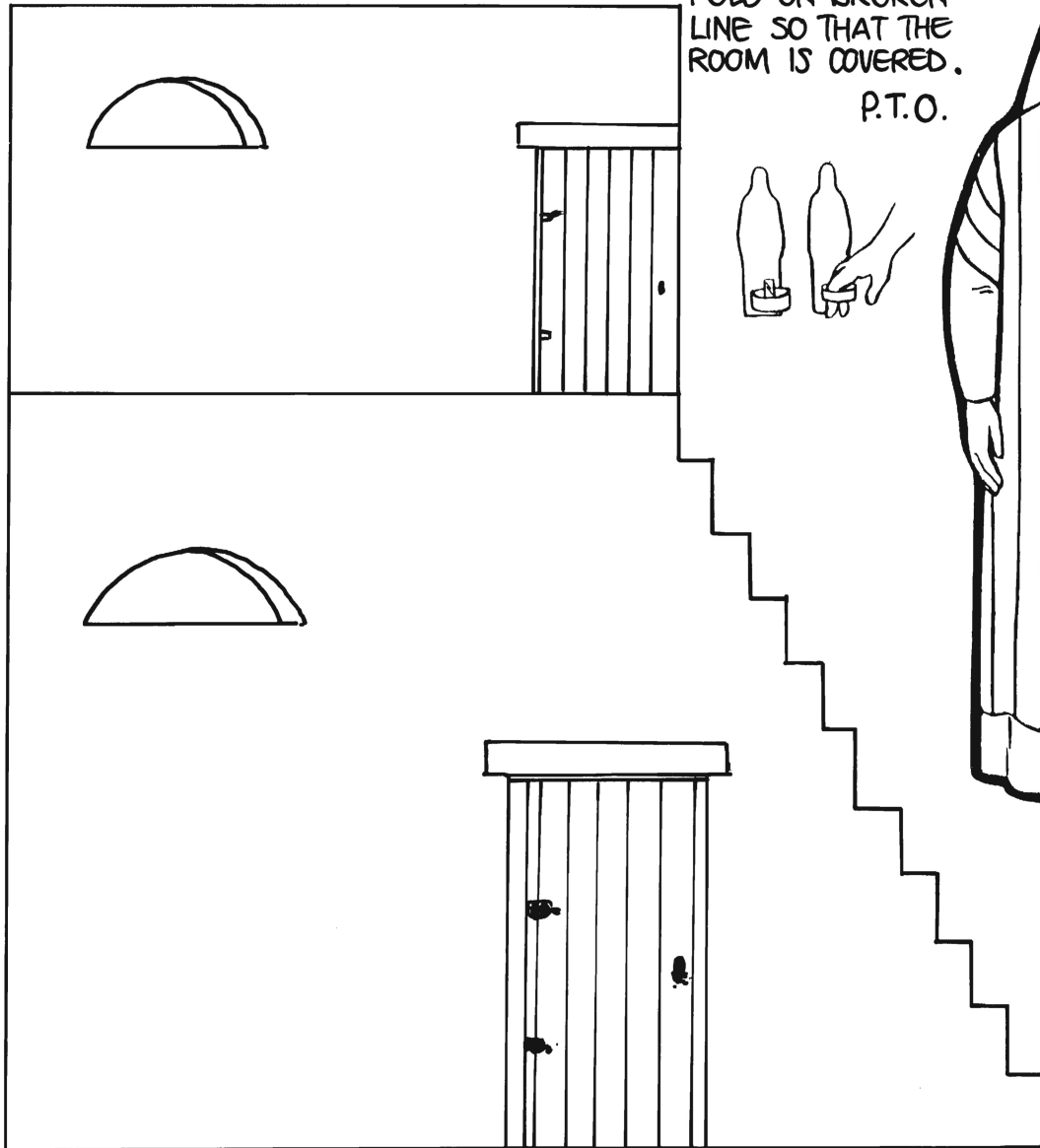


## HOW TO MAKE IT

FOLD A PIECE OF WHITE CARD (28cm x 15.5cm) IN HALF. COPY THE

PATTERN OF THE HOUSE BELOW ONTO THE FRONT OF THE

CARD. CUT OUT THE OUTLINE ON BOTH SIDES OF THE CARD.



# ELISHA & ROOM

## MATERIALS REQUIRED

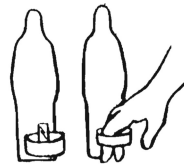
A PIECE OF WHITE CARD (APP. A4 SIZE) ● SCISSORS ● CELLOTAPE

## HOW TO MAKE IT

COLOUR PICTURE AND FIGURE. CUT FIGURE AND TAB FROM THE SIDE OF THE PAGE. TAPE THE TAB TO THE BACK OF THE FIGURE AS SHOWN BELOW. CUT PICTURE ON THE FOLLOWING PAGE AS INDICATED.

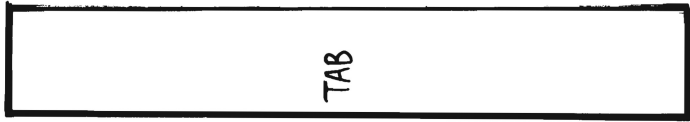
FOLD ON BROKEN LINE SO THAT THE ROOM IS COVERED.

P.T.O.



## CLASS ACTIVITY

IN CLASS CHILDREN TO OPEN THE CARD AND DRAW AND COLOUR IN THE FURNITURE OF ELISHA'S ROOM.

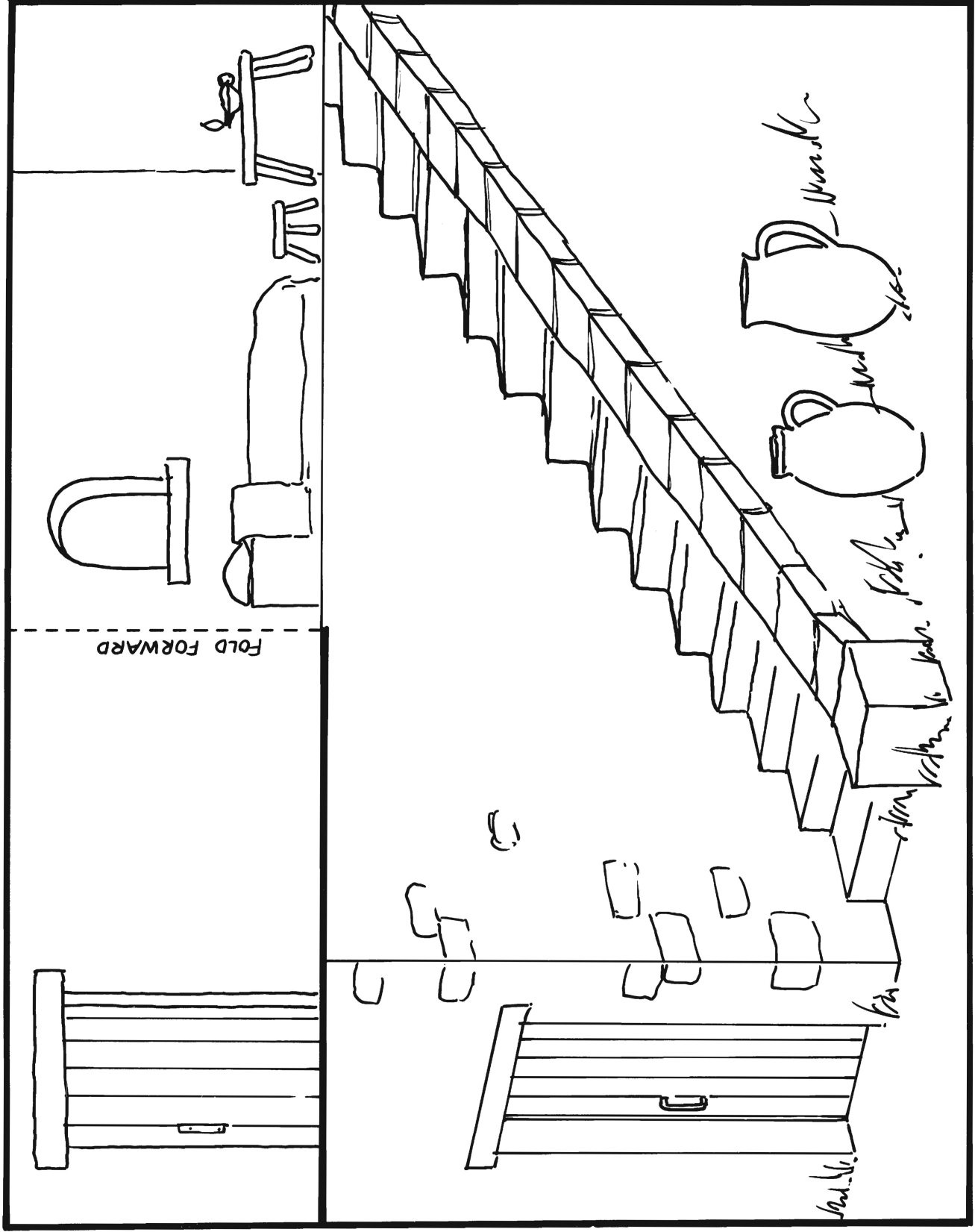


TAB

CUT ON THICK  
LINES-FOLD  
ON DOTTED  
LINE.

DRAW A DOOR  
ON THE OUTSIDE  
OF THE FOLD.

"WALK" FIGURE UP  
TO ROOM AND  
OPEN DOOR.



# ROCKING THE BABY



## MATERIALS REQUIRED

THIN WHITE CARD.  
 ● SCISSORS ● GLUE  
 ● COLOURED PENCILS

## HOW TO MAKE IT.

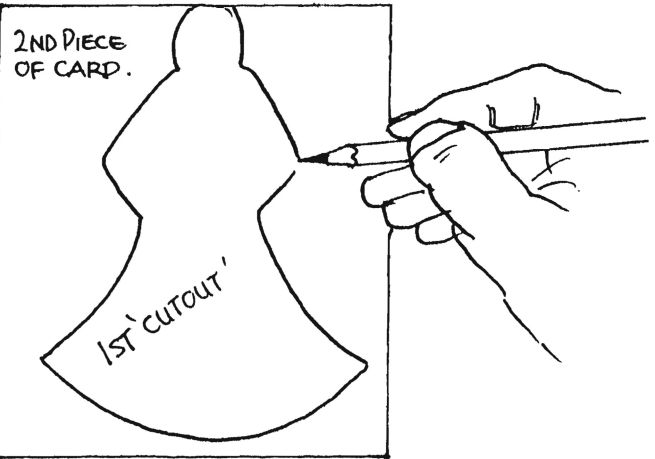
CUT OUT A CIRCLE OF CARD, ANY SIZE WILL DO, BUT YOU MAY LIKE TO USE THE PATTERN BELOW.



DRAW IN THE FIGURE OF THE WOMAN WITH CHILD. CUT OUT THE SHADED AREA. PLACE THE 'CUT OUT' ONTO ANOTHER PIECE OF CARD. DRAW AROUND THE OUTLINE AND CUT IT OUT. GLUE THE TWO PIECES TOGETHER ABOVE THE ARMS.

## CLASS ACTIVITY.

AFTER YOU HAVE DRAWN THE CHILDREN CAN COLOUR IN. WHEN YOU ARE SURE THAT THE GLUE IS DRY, CAREFULLY OPEN THE BOTTOM OF THE SKIRT A LITTLE, AND YOU CAN SET THE MODEL ROCKING.



## LAMP

COPY THIS LAMP ONTO CARD.  
 STICK ON CELLOPHANE TO FLAME.

