

C.S.S.A.

Jesus Heals The Man at the Pool of Bethesda

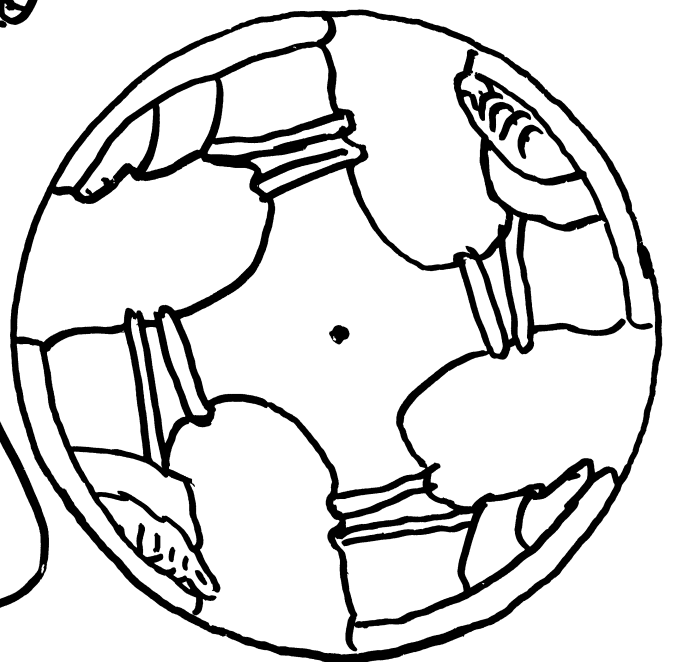
WALKING MODEL.

MATERIALS REQUIRED.

STIFF WHITE CARD ● SCISSORS
● GLUE ● COLOURED PENCILS OR
FELT TIP PENS ● PAPER FASTENER

HOW TO MAKE IT.

COPY THE PICTURE OF THE MAN AND
THE WHEEL ONTO STIFF WHITE
CARD. COLOUR IN, THEN CUT OUT.
PLACE THE WHEEL BEHIND THE
FIGURE AND ALIGN THE DOTS.
INSERT THE PAPER FASTENER
THROUGH THE DOTS. NOW HELP
THE MAN WALK BY PUSHING
THE MODEL ALONG!



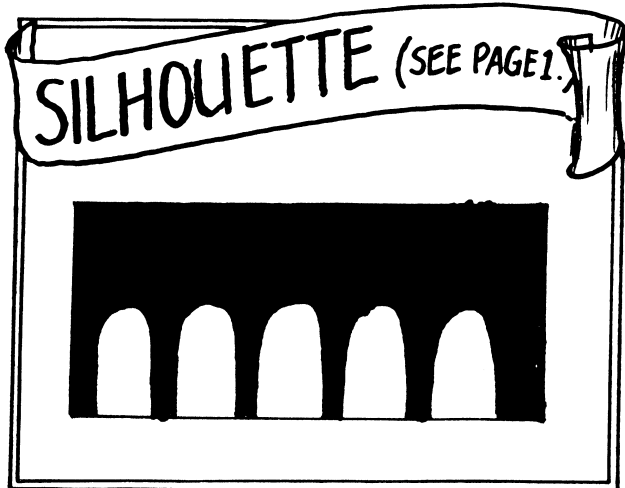
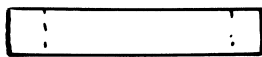
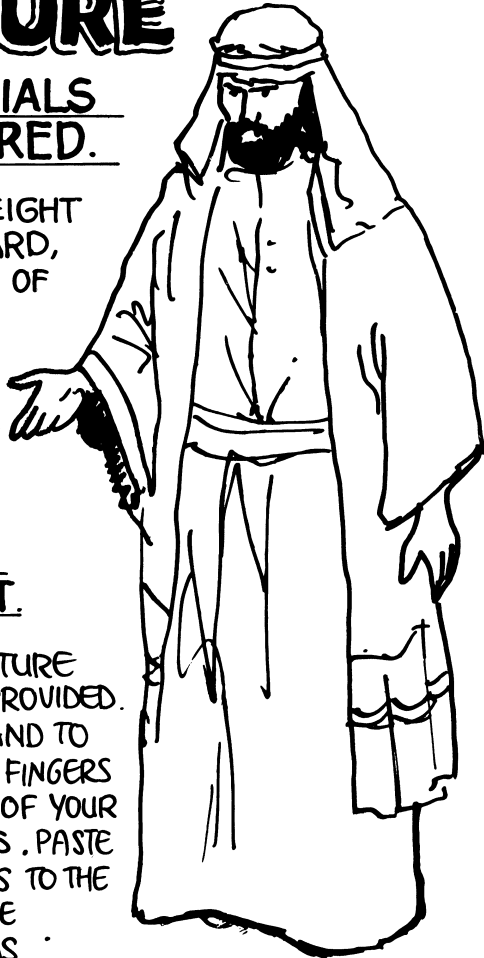
WALKING FIGURE

MATERIALS REQUIRED.

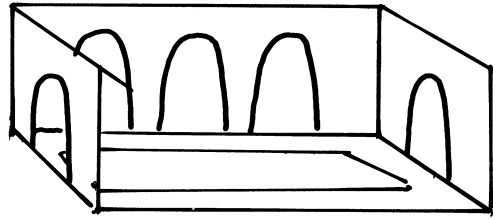
LIGHTWEIGHT CARDBOARD,
2 STRIPS OF PAPER
2.5 cm x 6.5 cm,
SCISSORS,
PASTE,
COLOURS.

HOW TO MAKE IT.

COPY PICTURE OF MAN PROVIDED. MAKE BAND TO FIT YOUR FINGERS OR THOSE OF YOUR SCHOLARS. PASTE THE BANDS TO THE BACK OF THE FIGURE AS SHOWN BELOW. SLIDE FINGERS THROUGH THE BANDS AND WALK BY MOVING FINGER ALONG TOP OF TABLE.



POOL MODEL.



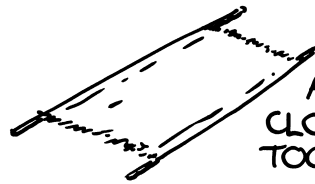
MATERIALS REQUIRED.

A PIECE OF CARD 27cm x 17cm.
● CRAFT KNIFE ● GLUE. ● SCISSORS.
● BLUE CELLOPHANE. ● CELLOTAPE.

HOW TO MAKE IT.

COPY PATTERN ON THE FOLLOWING PAGE ONTO A PIECE OF CARD THE SAME SIZE. CUT OUT THE SHADED AREAS. FOLD ON THE DOTTED LINES. GLUE WHERE INDICATED. TAPE A PIECE OF BLUE CELLOPHANE TO REPRESENT THE POOL (ATTACH FROM UNDERNEATH).

TOOTHPICK BED.

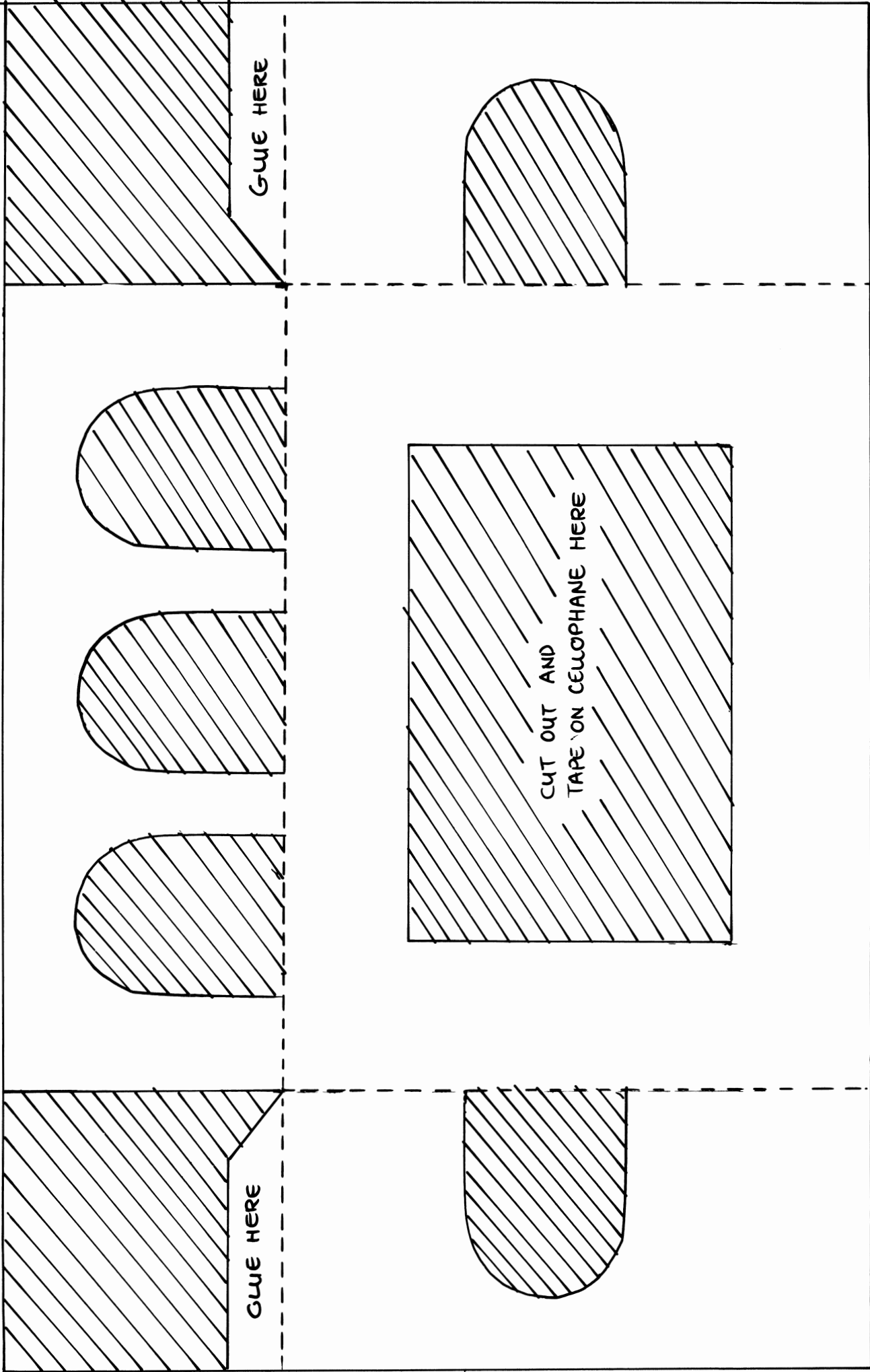


CAN BE EASILY MADE BY GLUEING A SMALL PIECE OF CLOTH ONTO TWO TOOTH PICKS.

KIND FEET



ON A 'LARGE' PIECE OF PAPER OR CARD, LET SCHOLARS DRAW AROUND THEIR OWN FEET. INSIDE FOOT PRINTS WRITE; "MY FEET CAN HELP OTHERS" OR SOMETHING SIMILAR.



DEMONSTRATION MODEL

CUT OUT FIGURES. MAKE SLITS IN BACKGROUND PICTURE AS INDICATED. INSERT FIGURE N°1. AS STORY UNFOLDS REPLACE WITH FIGURE N°2.

