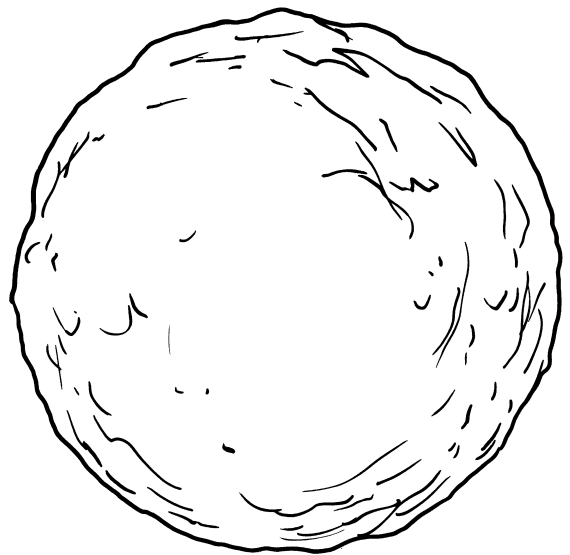
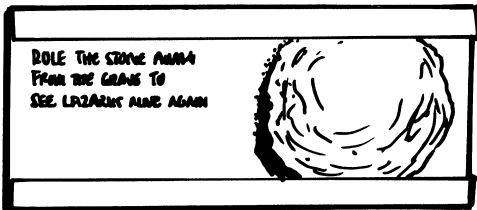


Raising Lazarus

SURPRISE CARD

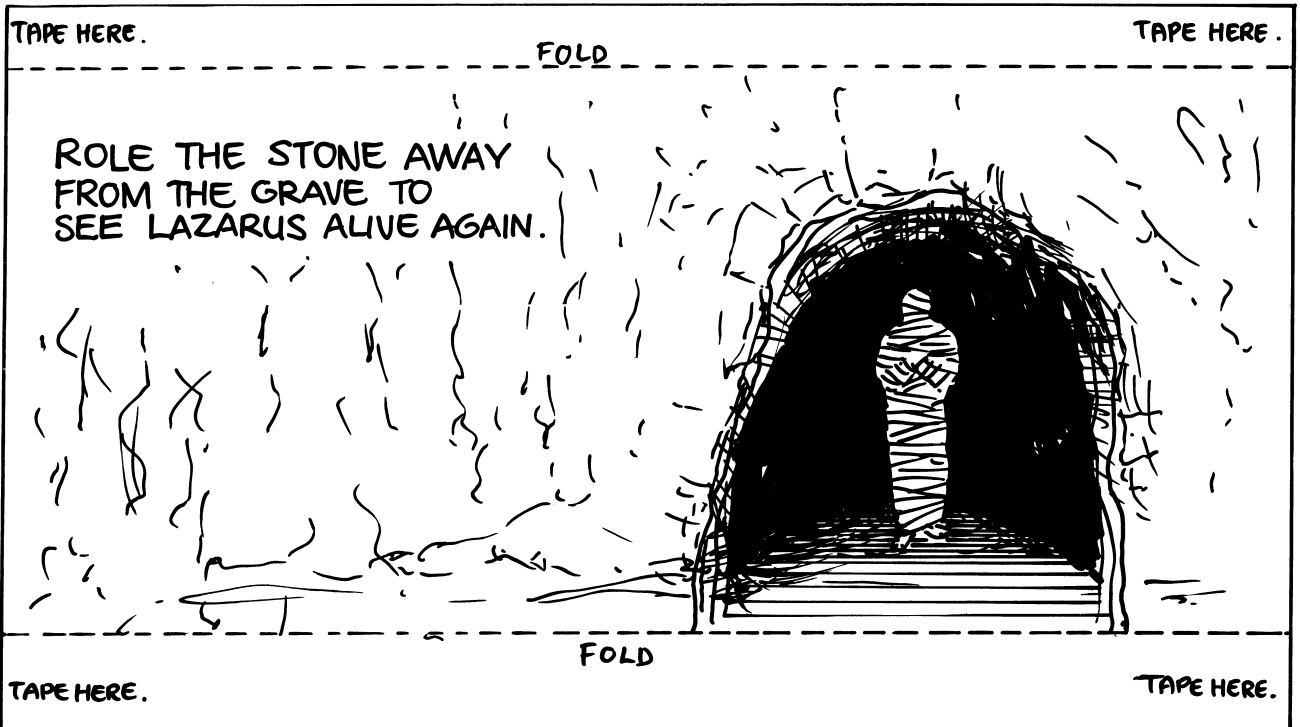
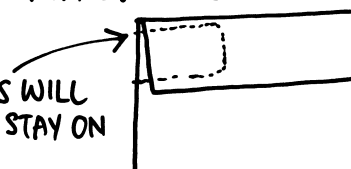


MATERIALS REQUIRED.

- CARD OR THICK PAPER ● SCISSORS
- CELLOTAPE.

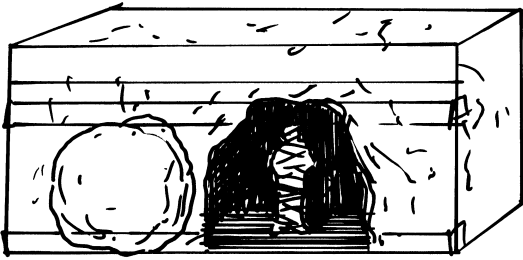
HOW TO MAKE IT.

COPY AND CUT OUT THE STONE AND CARD. FOLD ON DOTTED LINES. PLACE THE 'STONE' INSIDE THE TWO FLAPS. GLUE THE ENDS OR CELLOTAPE AS SHOWN OPPOSITE. THIS WILL HELP THE STONE STAY ON THE CARD.



GRAVE MODEL

FOLD ON DOTTED LINES. GLUE FLAPS. CUT OUT SHADED AREA.



THIS SIMPLE LITTLE MODEL IS QUICK ENOUGH TO MAKE FOR EACH SCHOLAR IN THE CLASS.

MATERIALS REQUIRED

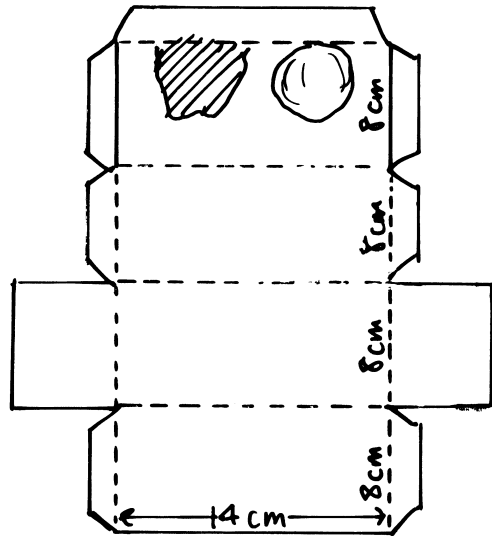
SMALL CARDBOARD BOX SUCH AS A SHOE BOX OR MAKE UP A BOX BY FOLLOWING THE DIRECTIONS OPPOSITE. ● GLUE ● SCISSORS ● BLACK PAINT

HOW TO MAKE IT.



PAINT THE INSIDE OF THE BOX BLACK, BEFORE ASSEMBLING. CUT OUT FIGURE, FOLD WHERE INDICATED AND GLUE INSIDE OF BOX, TO ADD MORE EFFECT TO THE FIGURE. CUT STRIPS OF TISSUE PAPER AND GLUE ON. THE OUTSIDE OF THE BOX CAN BE PAINTED A ROCK COLOUR IE; BROWN OR GREY. A 'MOVING' STONE CAN BE ADDED AS PER PREVIOUS PAGE JUST TAPE ON 2 CARDBOARD GUIDES FOR THE STONE TO SLIDE ON.

FOLD BACK THIS SECTION GLUE TO FLOOR OF GRAVE.



- TO GRAPHICALLY PORTRAY HOW GRAVECLOTHES LOOKED, CUT UP THIN STRIPS OF AN OLD WHITE SHEET AND BIND THEM AROUND A DOLL.
- CUT OUT THE FIGURE PROVIDED HERE FROM A PIECE OF CARDBOARD. GIVE ONE TO EACH SCHOLAR. CUT STRIPS OF TISSUE OR WHITE PAPER AND BRING ALONG TO THE CLASS WITH SOME GLUE. TEACHER APPLIES GLUE TO FIGURE WHILST SCHOLARS APPLY THE STRIPS OF PAPER.
- TEAR AN OLD SHEET INTO LONG STRIPS AND SEW END TO END, AN OLDER SCHOLAR MAY SUBMIT TO BEING BOUND FROM HEAD TO TOE IN 'GRAVE CLOTHES' - THE YOUNG ONES WILL NEVER FORGET THIS LESSON!

