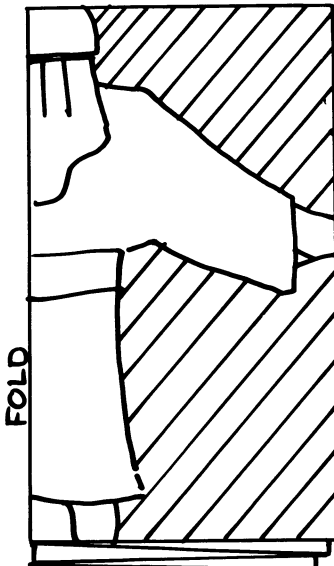


The Disciples See Jesus Go To Heaven

12 DISCIPLES



MATERIALS REQUIRED.

A PIECE OF PAPER 13 TIMES THE WIDTH OF THE INITIAL FOLD. EG- THE WIDTH OF EXAMPLE IS 40mm MULTIPLY THIS BY 13. i.e; 520mm. ● SCISSORS

HOW TO MAKE

FOLD THE PAPER ACCORDION STYLE 12 X. THIS WILL

MAKE 13 PANELS. DRAW HALF A FIGURE ON END PANEL. CUT OUT SHADED AREA. WRITE NAMES OF DISCIPLES ON THE FIGURES OR IF STUDENTS ARE OLD ENOUGH THEY CAN DO THIS IN CLASS.



ASCENSION MODEL

THE MODEL ON PAGE 2 WILL WORK BEST ON HEAVY PAPER OR THIN CARD. CUT ON LINES FOLD ON DOTTED LINES.

UNFOLD PANELS TO SHOW JESUS ASCENDING INTO HEAVEN THEN BRING OVER THE FLAP WHICH REPRESENTS THE CLOUD WHICH TOOK JESUS OUT OF THE SIGHT OF THE APOSTLES.



ASCENSION CARD.

THIS LITTLE CARD DEPICTS THE ASCENSION OF CHRIST. IT WILL ALSO GIVE SOME ACTIVE PARTICIPATION BY SCHOLARS

MATERIALS REQUIRED.

SQUARES OF PAPER (ANY REASONABLE SIZE) ● GLUE ● COTTON WOOL ● COLOURED PENCILS, CRAYONS OR FELT TIPPED PENS.

HOW TO MAKE IT.

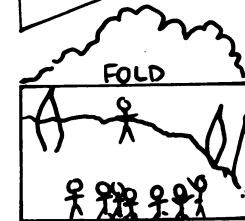


FOLD THE PIECE OF PAPER IN HALF WITH THE TOP HALF BEING SLIGHTLY SMALLER THAN THE BOTTOM.

DRAW A CLOUD OUTLINE ON THE TOP FLAP AS SHOWN. CHILDREN CAN TAKE OVER FROM HERE IF YOU DESIRE.



CHILDREN TO TEAR CAREFULLY AROUND THE OUTLINE OF THE CLOUD. THE CLOUD CAN BE COLOURED IN OR COTTON WOOL MAY BE GLUED ON.



ON THE LOWER HALF CHILDREN CAN DRAW THEIR OWN PICTURE OF JESUS ON TOP OF THE HILL AND HIS DISCIPLES WATCHING.



YOU MAY HAVE TO GUIDE THE SCHOLARS SO THAT THE 'CLOUD' WILL COVER JESUS WHEN THE FLAP IS FOLDED OVER.



FOLD

GLUE COTTON ON BACK OF THIS FLAP.
CUT

FOLD

CUT

FOLD

FOLD

FOLD



THE DISCIPLES WATCH JESUS
GO TO HEAVEN.



COLLAGE

MATERIALS REQUIRED.

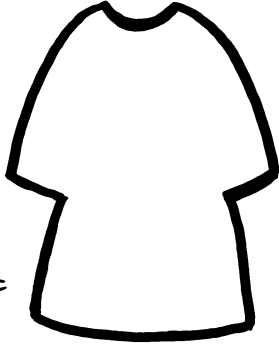
● SCISSORS ● GLUE ● OLD MAGAZINES ● WHITE CARD ● BUTTONS.

HOW TO MAKE IT.

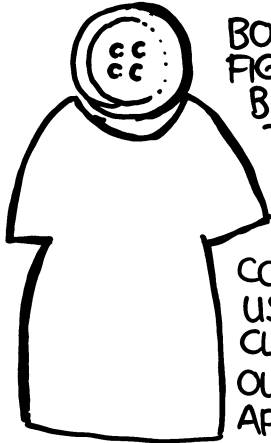


BEFORE SUNDAY SCHOOL PREPARE 1 OR MORE CARDS WITH A HILL DRAWN ON WITH FELT TIP PEN.

USE THE PATTERN OPPOSITE TO CUT OUT AS MANY FIGURES AS YOU FEEL NECESSARY OUT OF MAGAZINE PICTURES OR IF YOU DESIRE OUT OF COLOURED PAPER.



THIS MAY ALSO BE DONE BY SCHOLARS WITH SAFETY SCISSORS.



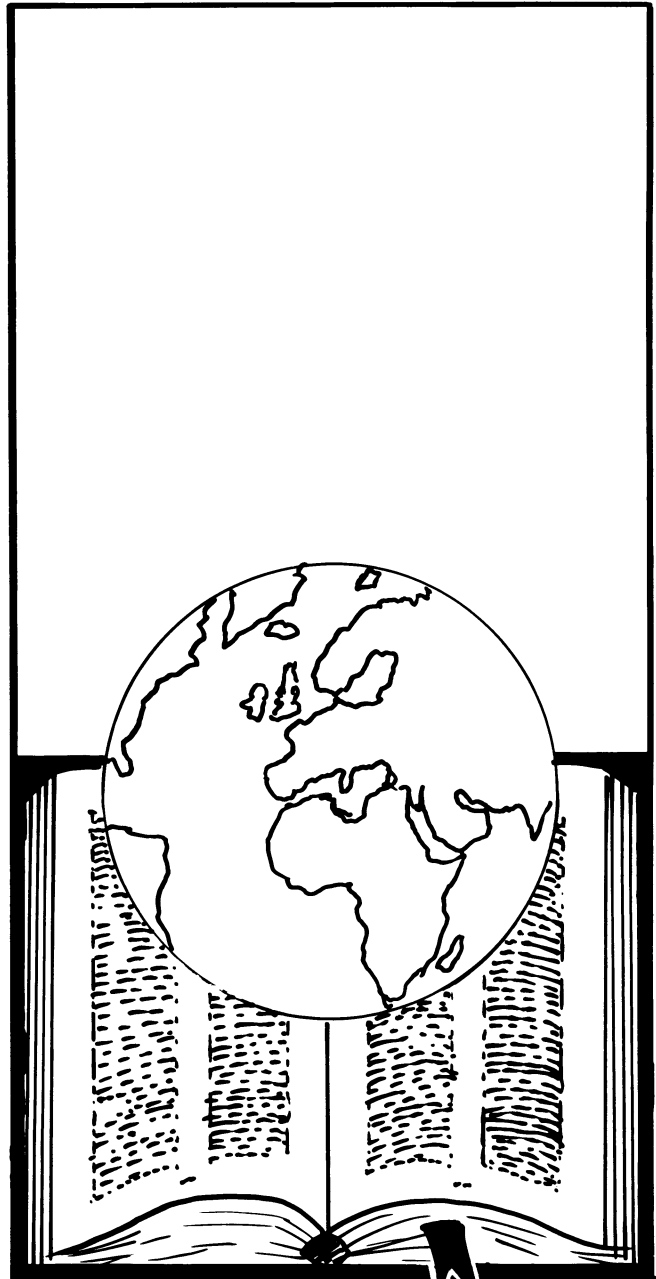
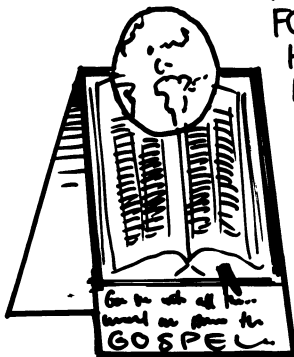
BOTH THE PAPER FIGURES AND THE BUTTONS CAN BE GLUED TO THE CARD TO MAKE UP A SCENE FROM THE MOUNT OF OLIVES.

COTTON WOOL CAN BE USED TO DEPICT THE CLOUD THAT TOOK JESUS OUT OF THE SIGHT OF THE APOSTLES.

STANDUP CARD

PHOTOCOPY THE PATTERN OF THE CARD OPPOSITE AND GLUE ONTO CARD OF THE SAME SIZE. CUT AROUND THE TOP OF THE WORLD WITH A SHARP CRAFT KNIFE. NOW

FOLD THE CARD IN HALF ALONG THE LINE OF THE TOP OF THE BIBLE. THE CARD SHOULD NOW STAND UP AS SHOWN HERE.



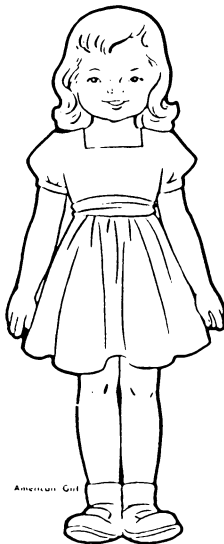
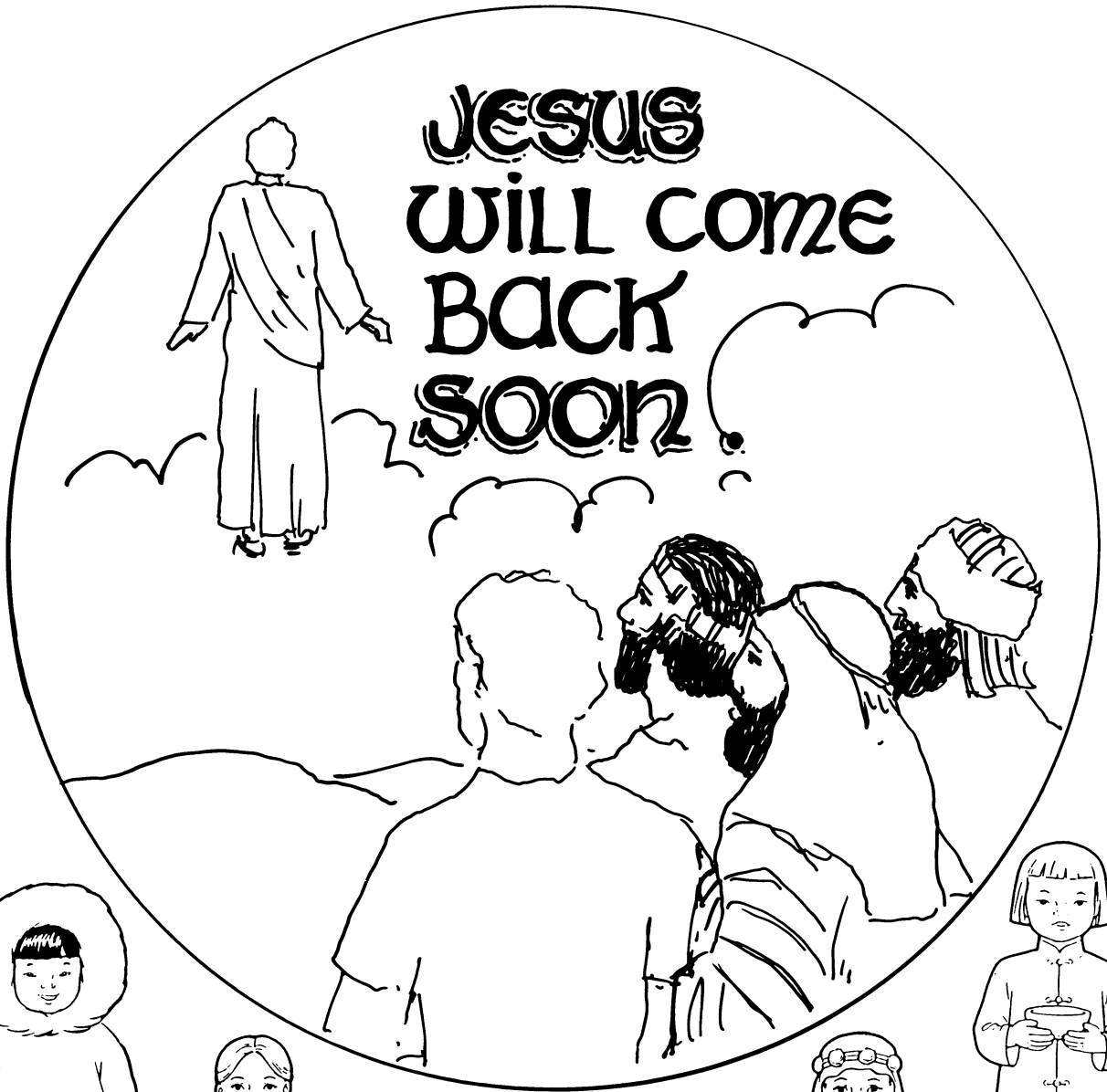
Go ye into all the world and preach the
GOSPEL

WALL HANGING

HOW TO MAKE IT.

USE PICTURE ON THE FOLLOWING PAGE. COPY AND GLUE ONTO A PAPER PLATE. TAPE WOOL OR RIBBON TO THE BACK OF PLATE TO HANG.





PEOPLE STICKS



USING THE PICTURES ON THIS PAGE MAKE A "PEOPLE STICK" FOR EACH SCHOLAR. COPY OR PHOTOCOPY THE PICTURES ONTO PAPER OR CARD. GLUE ONTO A LOLLY STICK. WRITE APPROPRIATE WORDS ON THE STICK, LE; "GO YE INTO ALL THE WORLD AND PREACH THE GOSPEL!"



MOBILE

HOW TO MAKE IT.

COPY THE "WORLD" ONTO A PIECE OF CARD. COPY THE PICTURES ON PAGE 4 ONTO PAPER OR CARD. PERHAPS AT THIS STAGE SCHOLARS CAN COLOUR THE WORLD AND CHILDREN. GLUE FIGURES TO THE WORLD AND THREAD THROUGH A PIECE OF WOOL FOR HANGING.

