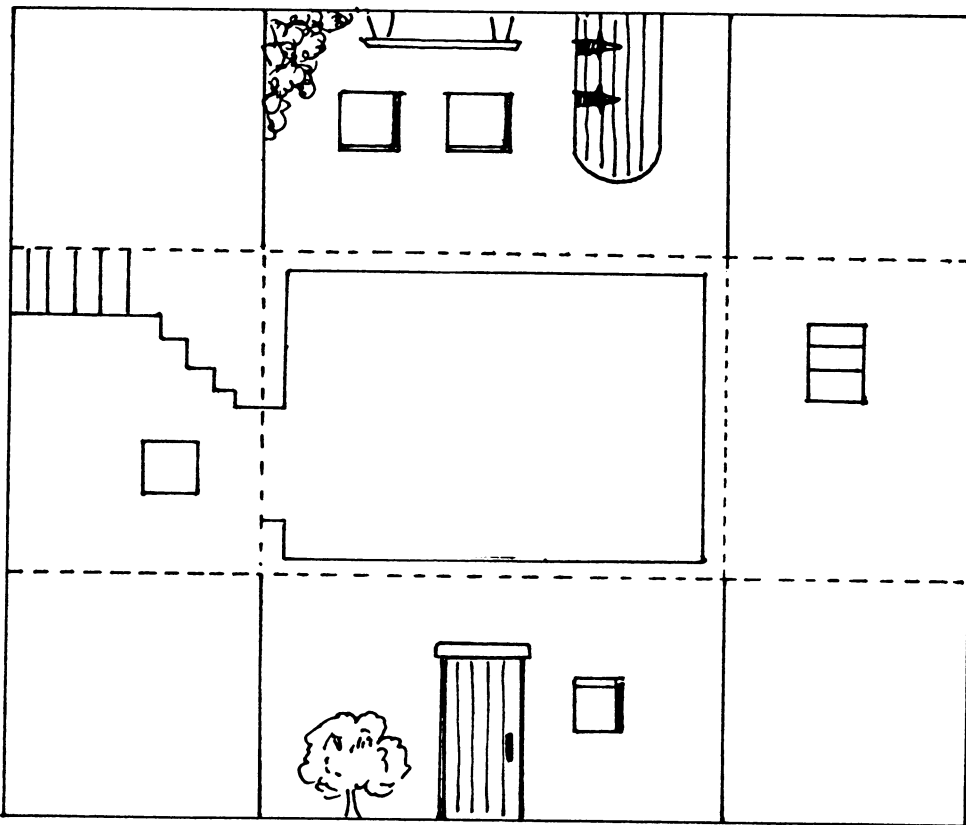


# Paul Comes to Rome

## PAULS HOUSE



### OTHER IDEAS

PREVIOUS  
CHAPTERS  
WHICH  
MENTION  
"CHAINS"  
LESSON 21  
USE THE  
SCROLL  
TO WRITE  
THE WORDS  
of 11 TIM. 4:7-8.

CUT ON SOLID LINES ~ FOLD ON DOTTED LINES.

## STAND UP CARD

**MATERIALS REQUIRED.**  
CARD • CRAFT KNIFE • COLOURS .

**HOW TO MAKE IT.**  
COPY OR PHOTOCOPY PATTERN ON  
THE NEXT PAGE, CUT AROUND  
THE ROMAN SOLDIER ABOVE  
THE FOLD LINE.

SCHOLARS TO WRITE BOOKS THAT PAUL WROTE FROM ROME.



FOLD

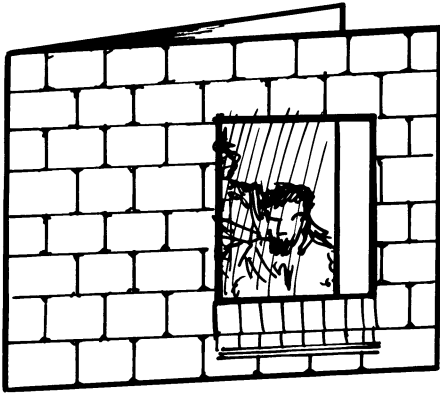
FOLD



# HOUSE CARD.

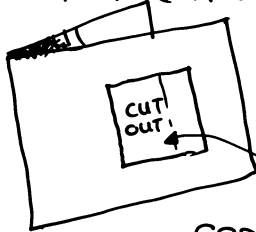
## MATERIALS REQUIRED.

CARD ● GLUE ● CRAFT KNIFE.



## HOW TO MAKE IT.

FOLD A PIECE OF CARD OR PAPER IN HALF. (APPROX. A4)



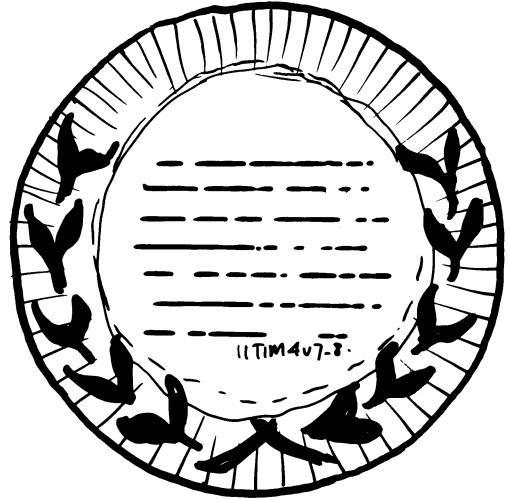
CUT HOLE IN THE FRONT OF THE CARD 8cm x 12cm

COPY THE PICTURE OF PAUL AND THE SOLDIER PROVIDED BELOW. GLUE THIS PICTURE ON THE INSIDE OF THE CARD, SO THAT YOU CAN SEE IT THROUGH THE WINDOW AT THE FRONT. WORDS SIMILAR TO THAT ON THE STANDUP CARD MAY BE ADDED INSIDE. DRAW IN BRICKS ON THE FRONT TO ADD REALISM.

# WALL HANGING

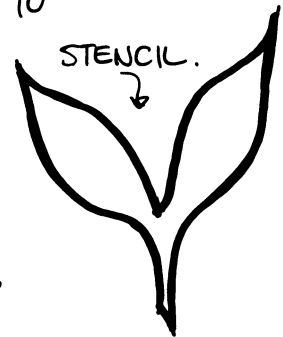
## MATERIALS REQUIRED.

PAPER PLATE ● PAINTS OR FELT PENS.



CUT OUT THE STENCIL PROVIDED HERE AND USE IT TO

DRAW THE OUTLINE OF THE LEAVES AROUND THE EDGE OF THE PLATE. COLOUR THE LEAVES WITH PAINT OR FELT-TIP PENS.



WRITE OUT 11TIM.4 v7,8 INSIDE THE PLATE. TAPE WOOL OR RIBBON TO THE BACK OF THE PLATE TO MAKE IT HANG.

